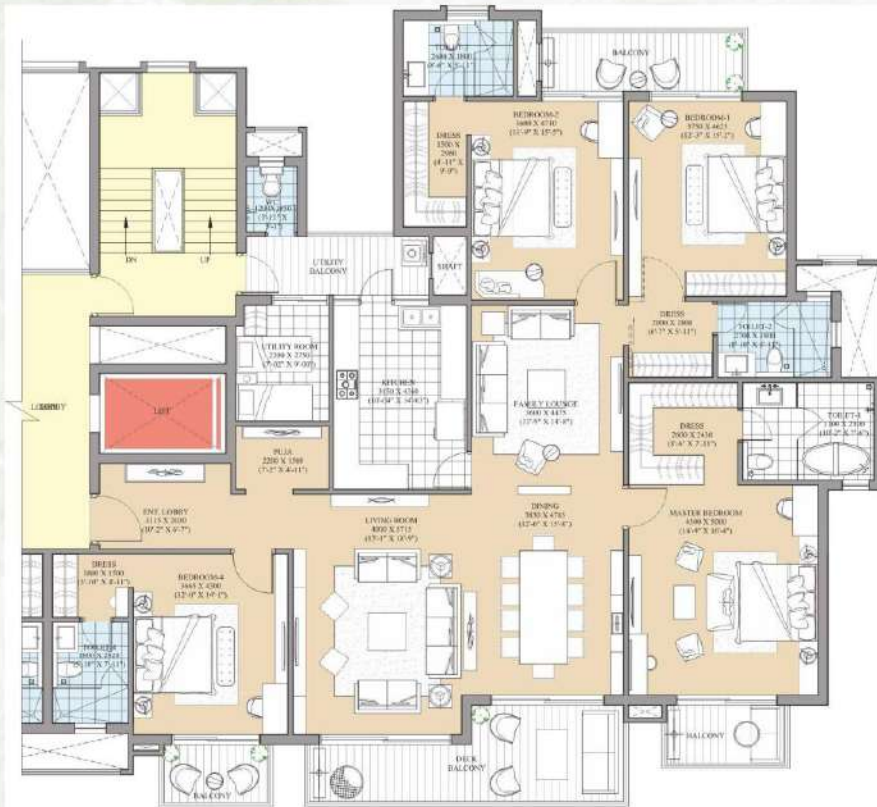


TYPICAL FLOOR PLAN – TYPE A (4 BEDROOM)



KEY PLAN

4 BED RESIDENCE

Super Area = 3300 sq.ft.

Built-up Area = 2860
sq.ft.

Common Circulation
+Services Area = 440
sq.ft

Carpet Area = 2251 sq.ft.

- Note:
1. The window size/ its location in rooms may change because of elevational features
 2. The overall layout may vary because of statutory reasons in case required
 3. The super area may vary by $\pm 10\%$
 4. Currently no columns are shown in the plan which will be incorporated as structure
 5. While converting millimeters (mm) to feet-inches, inches are rounded off to nearest possible whole number for ease of calculations.

Plan not to scale

TYPICAL FLOOR PLAN – TYPE A (3 BEDROOM + STUDY)



KEY PLAN

3 BED+STUDY RESIDENCE

Super Area = 2350 sq.ft.

Built-up Area = 1936 sq.ft.

Common Circulation
+Services Area = 414 sq.ft.

Carpet Area = 1519 sq.ft.

NOTE:

1. The window size/ its location in rooms may change because of elevational features.
2. The overall layout may vary because of statutory reasons in case required.
3. The super area may vary by ± 10%.
4. Current (if) no columns are shown in the plan which will be incorporated as structure.
5. While converting millimeters (mm) to feet-inches, inches are rounded off to nearest possible whole number for ease of calculations.

Plan not to scale