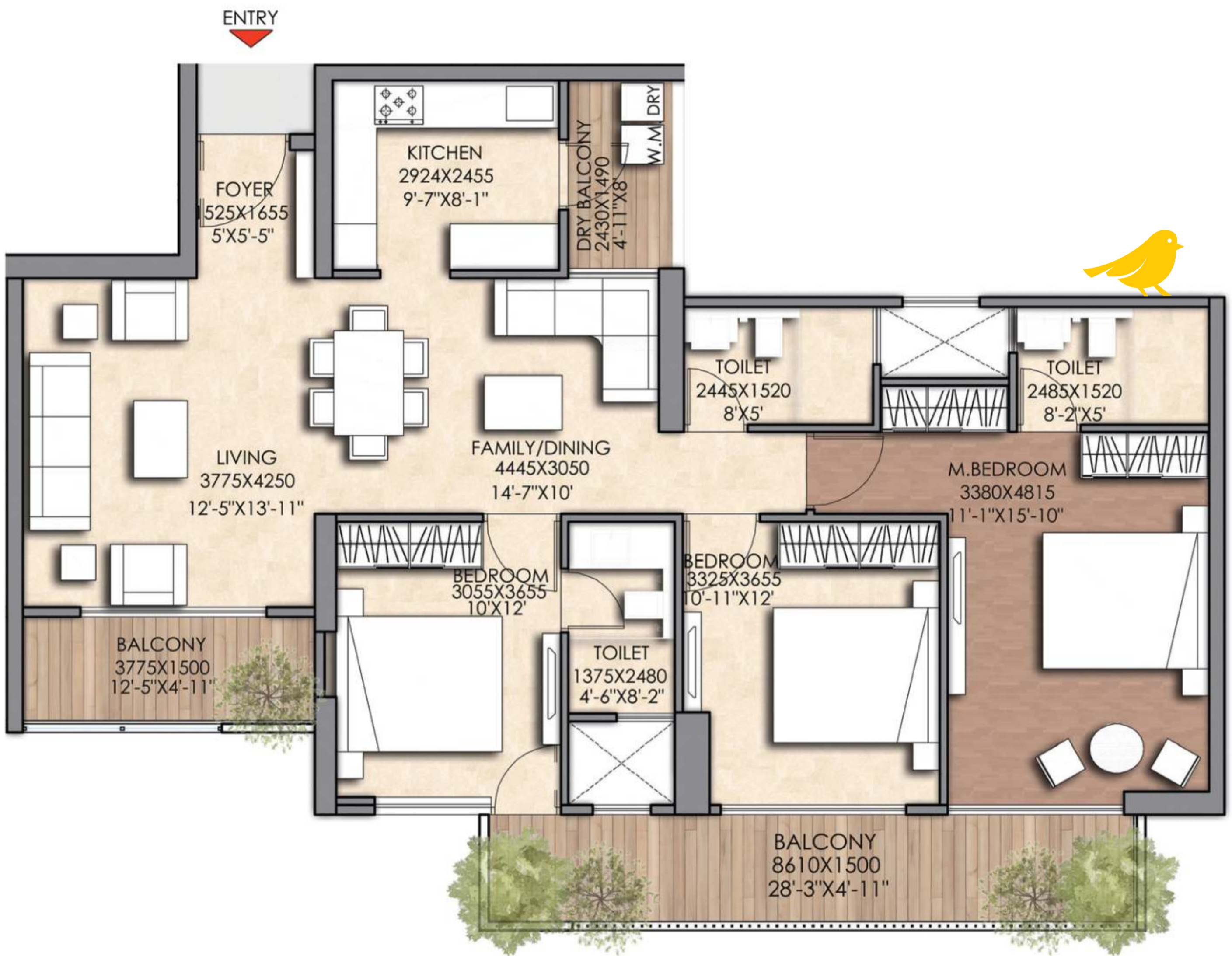




Master plan

Unit Plan

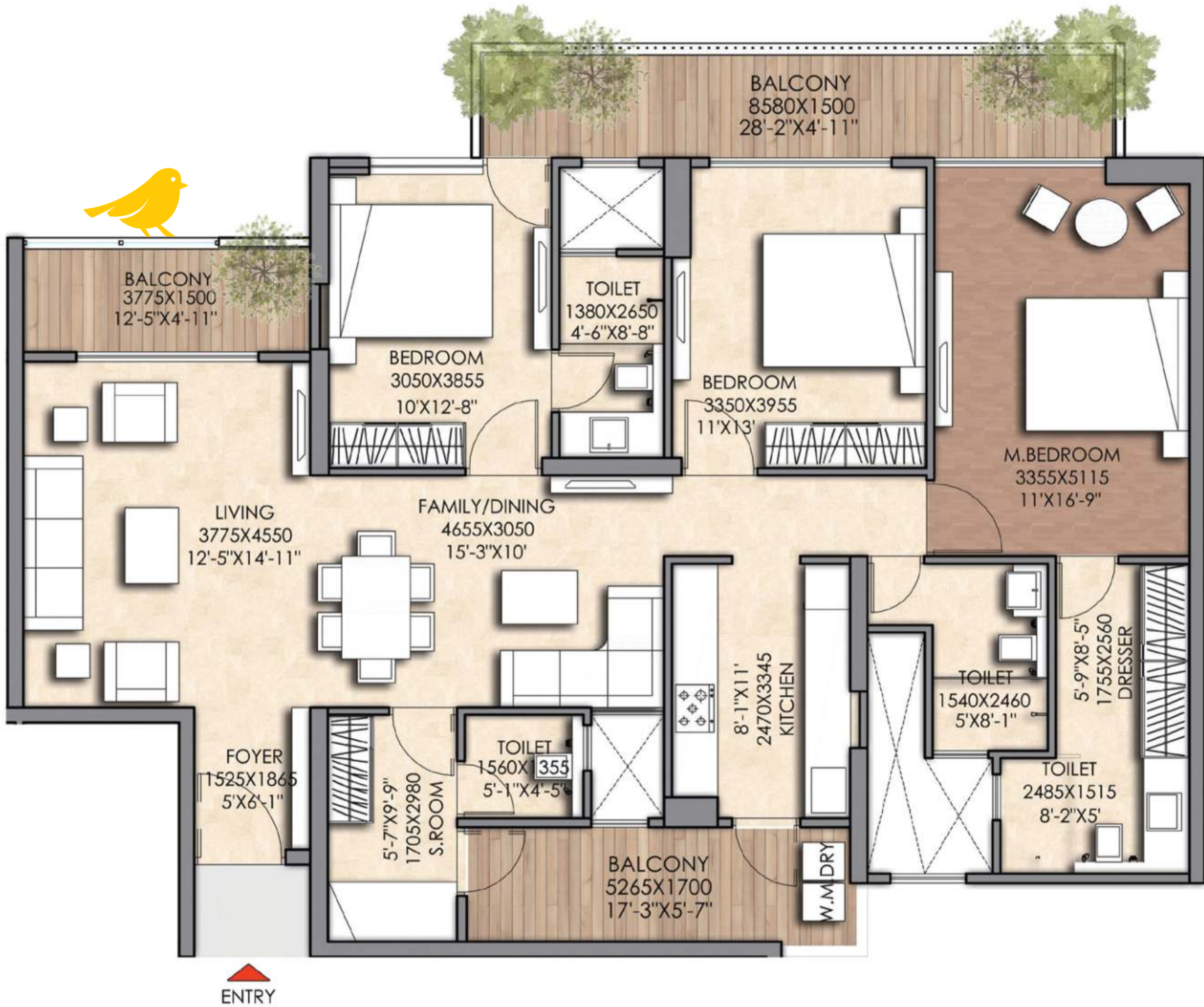


3 BHK (Elite)

Total Area = 1700.00 sq. ft.
Built-up Area = 1379.68 sq. ft.
Carpet Area = 1138.84 sq. ft.
Balcony Area = 240.84 sq. ft.

- 3 Bedrooms
- 3 Toilets
- Living Room
- Dining Room
- Kitchen with Dry Balcony
- Balconies

Unit Plan



3 BHK (Deluxe)

Total Area = 2040.00 sq. ft.

Built-up Area = 1636.20 sq. ft.

Carpet Area = 1346.20 sq. ft.

Balcony Area = 290.00 sq. ft.

- 3 Bedrooms
- 4 Toilets
- Living Room
- Dining Room
- Servant/Study Room
- Kitchen with Dry Balcony
- Balconies

Cluster Plan

Tower A - 1st to 28th Floor

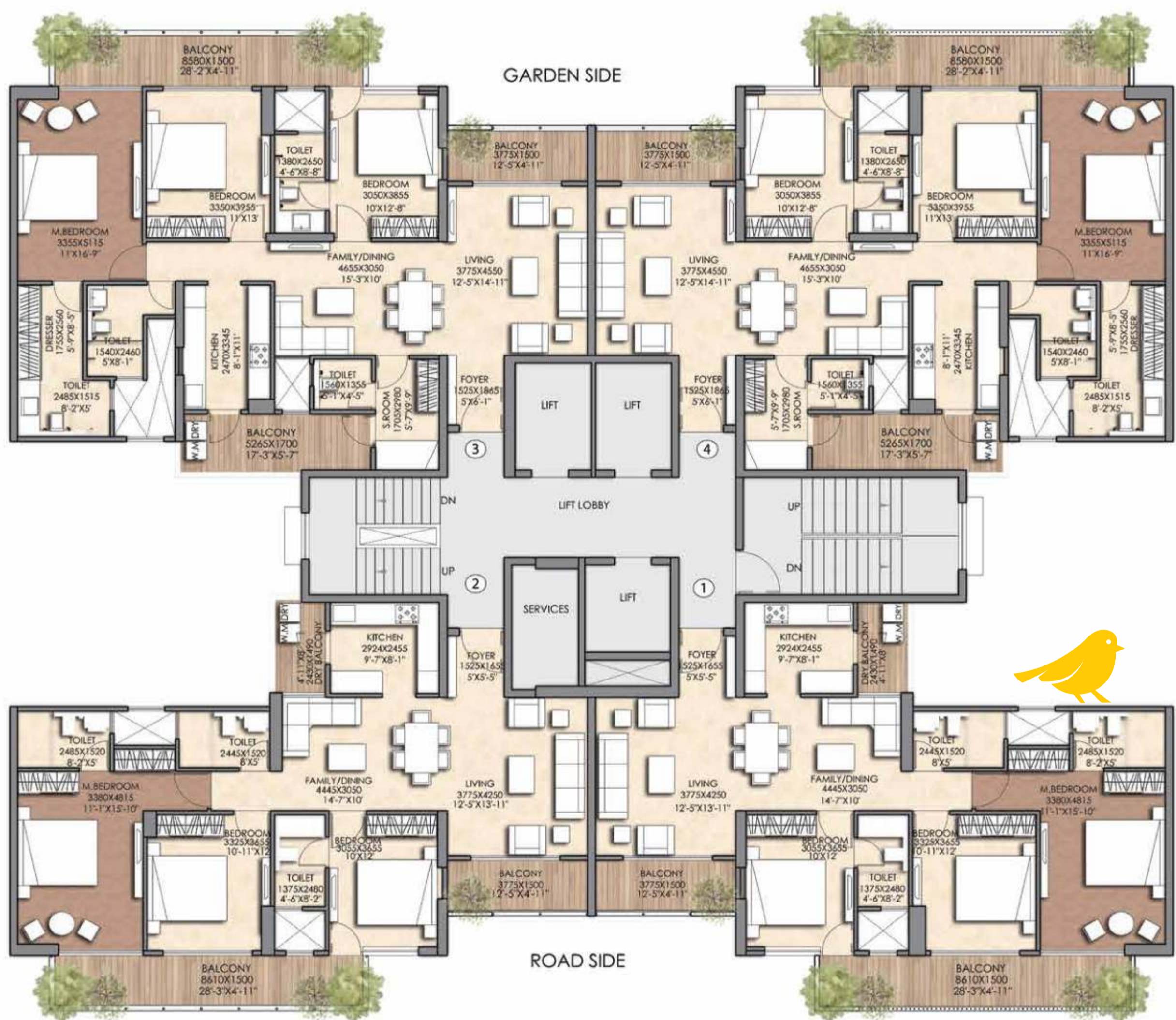
3 BHK (Deluxe)

Total Area = 2040.00 sq. ft.

Built-up Area = 1636.20 sq. ft.

Carpet Area = 1346.20 sq. ft.

Balcony Area = 290.00 sq. ft.



3 BHK (Elite)

Total Area = 1700.00 sq. ft.

Built-up Area = 1379.68 sq. ft.

Carpet Area = 1138.84 sq. ft.

Balcony Area = 240.84 sq. ft.

Cluster Plan

Tower B & C - 1st to 29th Floor

3 BHK (Deluxe)

Total Area = 2040.00 sq. ft.

Built-up Area = 1636.20 sq. ft.

Carpet Area = 1346.20 sq. ft.

Balcony Area = 290.00 sq. ft.



3 BHK (Elite)

Total Area = 1700.00 sq. ft.

Built-up Area = 1379.68 sq. ft.

Carpet Area = 1138.84 sq. ft.

Balcony Area = 240.84 sq. ft.

Unit Plan

Floors : 1st, 3rd, 5th, 7th, 9th, 11th, 14th, 16th, 18th, 20th, 22th, 24th, 26th & 28th



3 BHK (Luxury)

Total Area = 2555.00 sq. ft.

Built-up Area = 2057.59 sq. ft.

Carpet Area = 1618.88 sq. ft.

Balcony Area = 438.71 sq. ft.

- 3 Bedrooms
- 4 Toilets
- Living Room
- Dining Room
- Servant/Study Room
- Kitchen with Dry Balcony
- Balconies

Unit Plan

Floors : 2nd, 4th, 6th, 8th, 10th, 12th, 15th, 17th, 19th, 21st, 23rd, 25th, 27th & 29th



3 BHK (Luxury)

Total Area = 2555.00 sq. ft.

Built-up Area = 2057.59 sq. ft.

Carpet Area = 1618.88 sq. ft.

Balcony Area = 438.71 sq. ft.

- 3 Bedrooms
- 4 Toilets
- Living Room
- Dining Room
- Servant/Study Room
- Kitchen with Dry Balcony
- Balconies

Cluster Plan

Tower D, E & H, I

Floors : 1st, 3rd, 5th, 7th, 9th, 11th, 14th, 16th, 18th, 20th, 22th, 24th, 26th & 28th



3 BHK (Luxury)

- Total Area = 2555.00 sq. ft.
- Built-up Area = 2057.59 sq. ft.
- Carpet Area = 1618.88 sq. ft.
- Balcony Area = 438.71 sq. ft.

Cluster Plan

Tower D, E & H, I

Floors : 2nd, 4th, 6th, 8th, 10th, 12th, 15th, 17th, 19th, 21st, 23rd, 25th, 27th & 29th



3 BHK (Luxury)

Total Area = 2555.00 sq. ft.

Built-up Area = 2057.59 sq. ft.

Carpet Area = 1618.88 sq. ft.

Balcony Area = 438.71 sq. ft.

Unit Plan

Floors : 1st, 3rd, 5th, 7th, 9th, 11th, 14th, 16th, 18th, 20nd, 22th, 24th & 26th



4 BHK (Luxury)

Total Area = 3355.00 sq. ft.

Built-up Area = 2633.40 sq. ft.

Carpet Area = 2067.35 sq. ft.

Balcony Area = 566.05 sq. ft.

- 4 Bedrooms
- 5 Toilets
- Living Room
- Dining Room
- Servant/Study Room
- Kitchen with Dry Balcony
- Balconies

Unit Plan

Floors :

2nd, 4th, 6th, 8th, 10th, 12th, 15th, 17th, 19th, 21st, 23rd, 25th & 27th



4 BHK (Luxury)

Total Area = 3355.00 sq. ft.

Built-up Area = 2633.40 sq. ft.

Carpet Area = 2067.35 sq. ft.

Balcony Area = 566.05 sq. ft.

- 4 Bedrooms
- 5 Toilets
- Living Room
- Dining Room
- Servant/Study Room
- Kitchen with Dry Balcony
- Balconies

Cluster Plan

Tower F & G

Floors : 1st, 3rd, 5th, 7th, 9th, 11th, 14th, 16th, 18th, 20nd, 22th, 24th & 26th



4 BHK (Luxury)

Total Area = 3355.00 sq. ft.

Built-up Area = 2633.40 sq. ft.

Carpet Area = 2067.35 sq. ft.

Balcony Area = 566.05 sq. ft.

Cluster Plan

Tower F & G

Floors : 2nd, 4th, 6th, 8th, 10th, 12th, 15th, 17th, 19th, 21st, 23rd, 25th & 27th



4 BHK (Luxury)

Total Area = 3355.00 sq. ft.

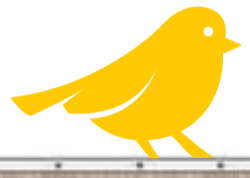
Built-up Area = 2633.40 sq. ft.

Carpet Area = 2067.35 sq. ft.

Balcony Area = 566.05 sq. ft.

Cluster Plan

Lower Duplex Plan Tower F & G



TYPE	FLOOR	CARPET AREA	BALCONY AREA	BUILT-UP AREA	TOTAL AREA
		SQ.FT.	SQ.FT.	SQ.FT.	SQ.FT.
DUPLEX PENT HOUSE	LOWER DUPLEX	2025.70	731.90	2757.60	6100
	UPPER DUPLEX	1725.94	398.95	2124.89	
TOTAL BUILT-UP AREA				4882.49	

Cluster Plan

Upper Duplex Plan Tower F & G



Total Area = 6100.00 sq. ft.