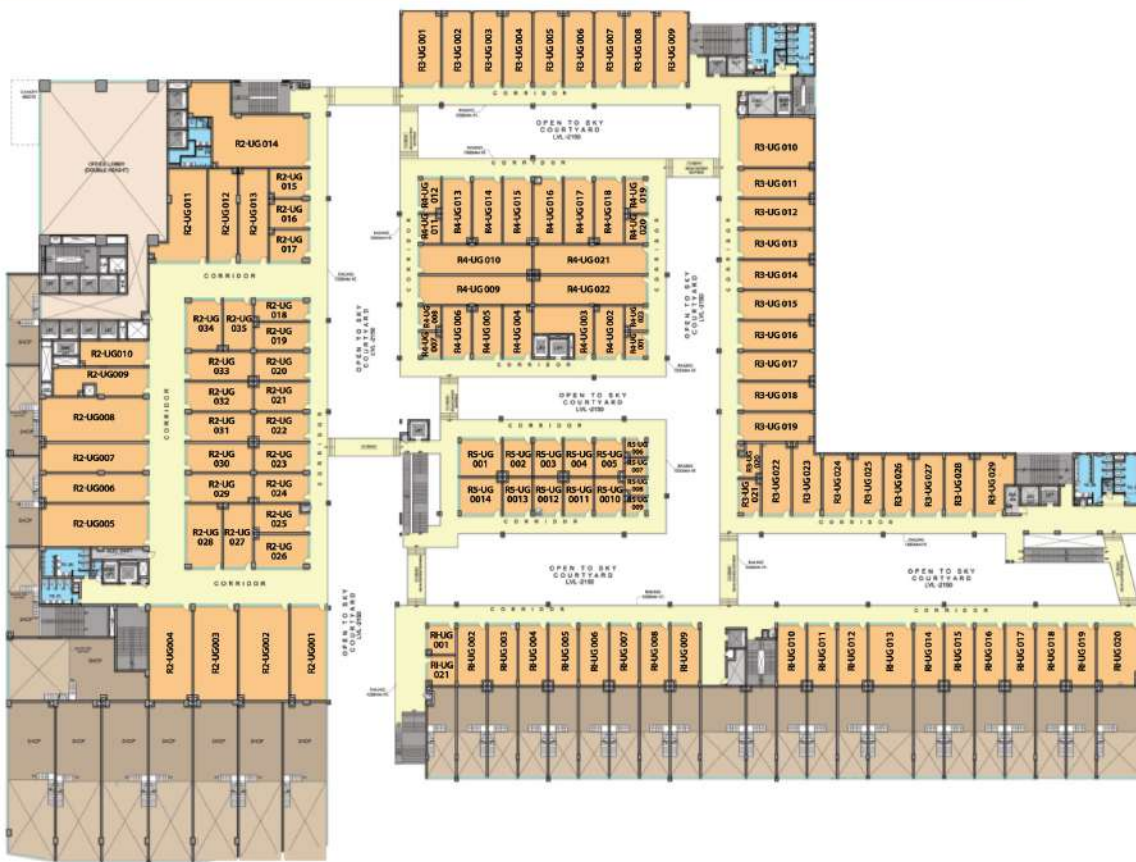


# FLOOR PLAN - UPPER GOURND FLOOR



Disclaimer: Floor plan / site plan / level plan, as the case may be, and as the situation and circumstances so warrant it to be read in conjunction with all Easement No. 121 of 2008 dated 14/06/2008 (as amended) (SPS) (2002) 01 (PBR) Registration No. 17 of 2018 (dated 24.01.2018) (18) Approved Building plans and remains thereto / thereof Measurement herein are approximate and are for illustrative purposes only. Information herein may contain technical inaccuracies or typographical errors. While Promoter does not doubt the plans accuracy, no guarantee, warranty or representation as to the accuracy and completeness is being made. Attention is drawn to the fact that a careful independent investigation is to be made by the purchaser. Plans are intended to give a general indication of the proposed layout only. Site plan and landscaping are not intended to form part of any contract or warranty unless specifically incorporated in writing into the contract. Minor inaccuracies in square footage and dimensions in layout and room dimensions as shown on any plan will not affect the validity of the purchase of the Unit without abatement in price and/or recovery against the Promoter. Dimensions are not intended to form part of any contract or warranty unless specifically incorporated in writing into the contract. Specifications are not intended to form part of any contract or warranty unless specifically incorporated in writing into the contract. Promoter may make such minor additions or alterations as may be required by the Authority, or such minor changes or alterations as per the provisions of the Act and Rules made thereunder or as per the applicable / instructions / guidelines of the Competent Authorities, or such other changes as may be required to make the enjoyment of the Project comfortable and convenient for the different occupant units at large.

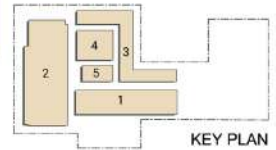
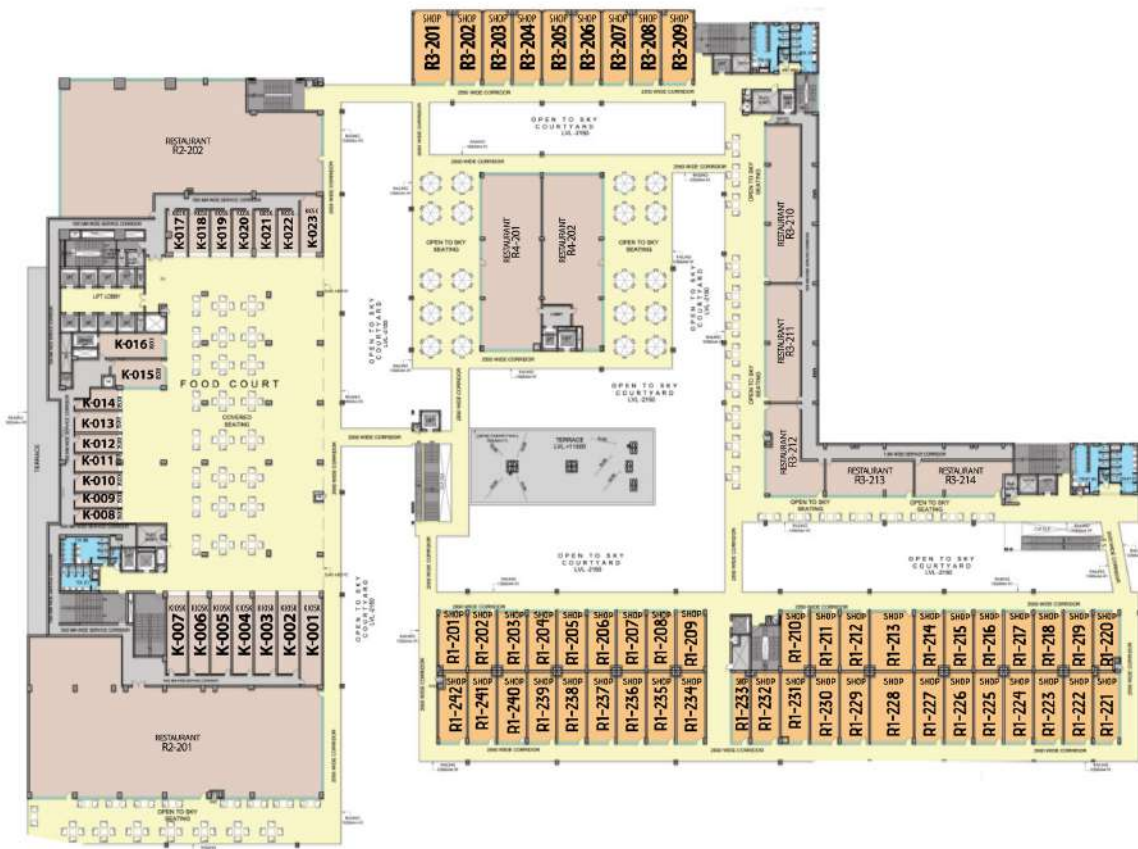
1 Plot - 2.471 Acres, 1 Acqr-4848 sq.ft. or 404.204 sq. mtrs, 1 sq.mtr=10.764 sq.ft.

# FLOOR PLAN - FIRST FLOOR



Disclaimer: Floor plan / site plan / site plan, as the case may be and as the situation and circumstances so warrant it to be read in conjunction with: (i) Licence No. 121 of 2008 dated 14/06/2008 as amended (up to date); (ii) MEMA Registration No. 17 of 2010 dated 24/11/2010; (iii) Approved Building plans and sections thereto; (iv) Level Measurement taken as appropriate and as for illustrative purposes only. Information herein may contain technical inaccuracies or typographical errors. While Promoter does not exclude the plan accuracy, no guarantee, warranty or representation as to the accuracy and completeness is being made. Absence and/or its inclusion should conduct a careful, independent investigation to its satisfaction. Plans shown intended to give a general indication of the proposed layout only. Site plans and drawings are not intended to form part of any contract or warranty unless specifically incorporated by writing into the contract. Minor inaccuracies in regard to heights and dimensions as shown on any plan will not affect the Allowance from completing the purchase of the Unit without detriment to the purchaser. Dimensions are not intended to form part of any contract or warranty unless specifically incorporated by writing into the contract. Specifics are not intended to form part of any contract or warranty unless specifically incorporated in writing into the contract. Promoter may make such other additions or alterations as may be required by the Authority, or such other changes or alterations as per the provisions of the Act and Rules made thereunder or as per the approval/instructions/guidelines of the Competent Authorities, or such other changes as may be required to make the enjoyment of the Project comfortable and convenient for the intended occupants/ users at large.  
1 Plot - 12471 Acres, 1 Acre=4840 sq.ft. or 4840.00 sq.meters, 1 Square=10.764 sq.ft.

# FLOOR PLAN - SECOND FLOOR



Disclaimer: Floor plan / site plan / rent plan, as the case may be, and as the situation and circumstances so warrant is to be read in conjunction with: (1) License No. 121 of 2008 dated 14.06.2008 as amended up to date; (2) MRPA Registration No. 17 of 2010 dated 24.11.2010; (3) Approved Building plans and sections thereto. Thereof. Measurements herein are approximate and are for illustration purposes only. Information herein may contain errors or inaccuracies or typographic or other errors. While Promoter does not exclude the plan accuracy, no guarantee, warranty or representation as to the accuracy and completeness is being made. Applicant and/or its advisors should conduct a careful, independent investigation to its satisfaction. Plans shown intended to give a general indication of the proposed layout only. Site plans and drawings are not intended to form part of any contract or warranty unless specifically incorporated by writing into the contract. Minor discrepancies in square footage and percentages in typical and more dimensions as shown on plan will not affect the Applicant from completing the purchase of the Unit without adjustment in price and/or refusal against the Promoter. Discrepancies are not intended to form part of any contract or warranty unless specifically incorporated by writing into the contract. Specifications are not intended to form part of any contract or warranty unless specifically incorporated by writing into the contract. Promoter may make such other additions or alterations or may be required by the Authority, or such minor changes or alterations as per the provisions of the Act and Rules made thereunder or as per the approved instructions/guidelines of the Competent Authorities, or such other changes as may be required to make the enjoyment of the Project comfortable and convenient for the absolute occupants' users at large. 1 Plot - 12471 Acres, 1 Area - 840 sq. ft. or 8946.86 sq. mtrs, 1 acre = 10764 sq. ft.

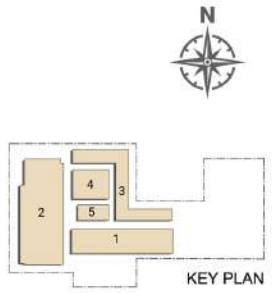
# FLOOR PLAN - LOWER GROUND FLOOR



Disclaimer: Floor plan / site plan / level plan, as the case may be, and as the situation and circumstances so warrant to be read in conjunction with: (i) License No. 121 of 2008 dated 14.06.2008 as amended upto date 14.06.2009; (ii) Registration No. 11 of 2016 dated 24.01.2016; (iii) Approved Building plans and sections thereof; (iv) Measurement thereon as appropriate and as for illustrative purposes only. Information herein may contain technical inaccuracies or typographical errors. MCM Promoter does not do this plan, accuracy, no guarantee, warranty or representation as to the accuracy and completeness is being made. Allottee and/or purchaser should conduct a careful independent investigation to their satisfaction. Plans herein intended to give a general indication of the proposed layout only. Site plan and landscaping are not intended to form part of any contract or warranty unless specifically incorporated in writing into the contract. Minor discrepancies in square footage and measuring, integral and open dimensions as shown or any plan will not excuse the Allottee from completing the purchase of the Unit without abatement in price and/or increase against the Promoter. Dimensions are not intended to form part of any contract or warranty unless specifically incorporated in writing into the contract. Specifications are not intended to form part of any contract or warranty unless specifically incorporated in writing into the contract. Promoter may make such minor additions or alterations as may be required by the Allottee, or such minor changes or alterations as per the provisions of the Act and Rules made thereunder or as per the approvals/instructions/guidelines of the Competent Authorities, or such other changes as may be required to make the enjoyment of the Project comfortable and convenient for the allottees/occupants/users at large.

1 Plot - 42471 Acres, 1 Area - 8846 sq.ft. or 4246.88 sq. mtrs., 1 sq.mtr = 10.764 sq.ft.

# FLOOR PLAN - GROUND FLOOR



Disclaimer: Floor plan / site plan / aerial plan, as the case may be, and as the situation and circumstances so warrant it to be read in conjunction with (i) License No. 121 of 2009 dated 14/09/2009 as renewed (up-to-date) by WPPA Registration No. 17 of 2016 dated 24.01.2016 (ii) Approved Building plans and remains thereof / thereof Measurement herein are approximate and are for illustrative purposes only. Information herein may contain technical inaccuracies or typographical errors. While Promoter does not doubt the plans accuracy, no guarantee, warranty or representation as to the accuracy and completeness is being made. Allottees and/or its advisors should conduct a careful, independent investigation to the / their satisfaction. Plans/ drawings are intended to give a general indication of the proposed layout only. Site plans and landscaping are not intended to form part of any contract or warranty unless specifically incorporated in writing into the contract. Minor inaccuracies in square footage and dimensions in layout and room dimensions as shown on any plan will not affect the Allottee from completing the purchase of the Unit without abatement in price and/or recovery against the Promoter. Dimensions are not intended to form part of any contract or warranty unless specifically incorporated in writing into the contract. Specifications shall not be intended to form part of any contract or warranty unless specifically incorporated in writing into the contract. Promoter may make such extra additions or alterations as may be required by the Allottee, or such extra changes or alterations as per the approvals/ instructions/ guidelines of the Competent Authorities, or such other changes as may be required to make the enjoyment of the Project comfortable and convenient for the allottee/ occupier/ user at large.

1 Plot - 2.471 Acres, 1 Acre - 4840 sq.ft. or 484.00 sq. mtrs., 1 Square - 10,764 sq.ft.